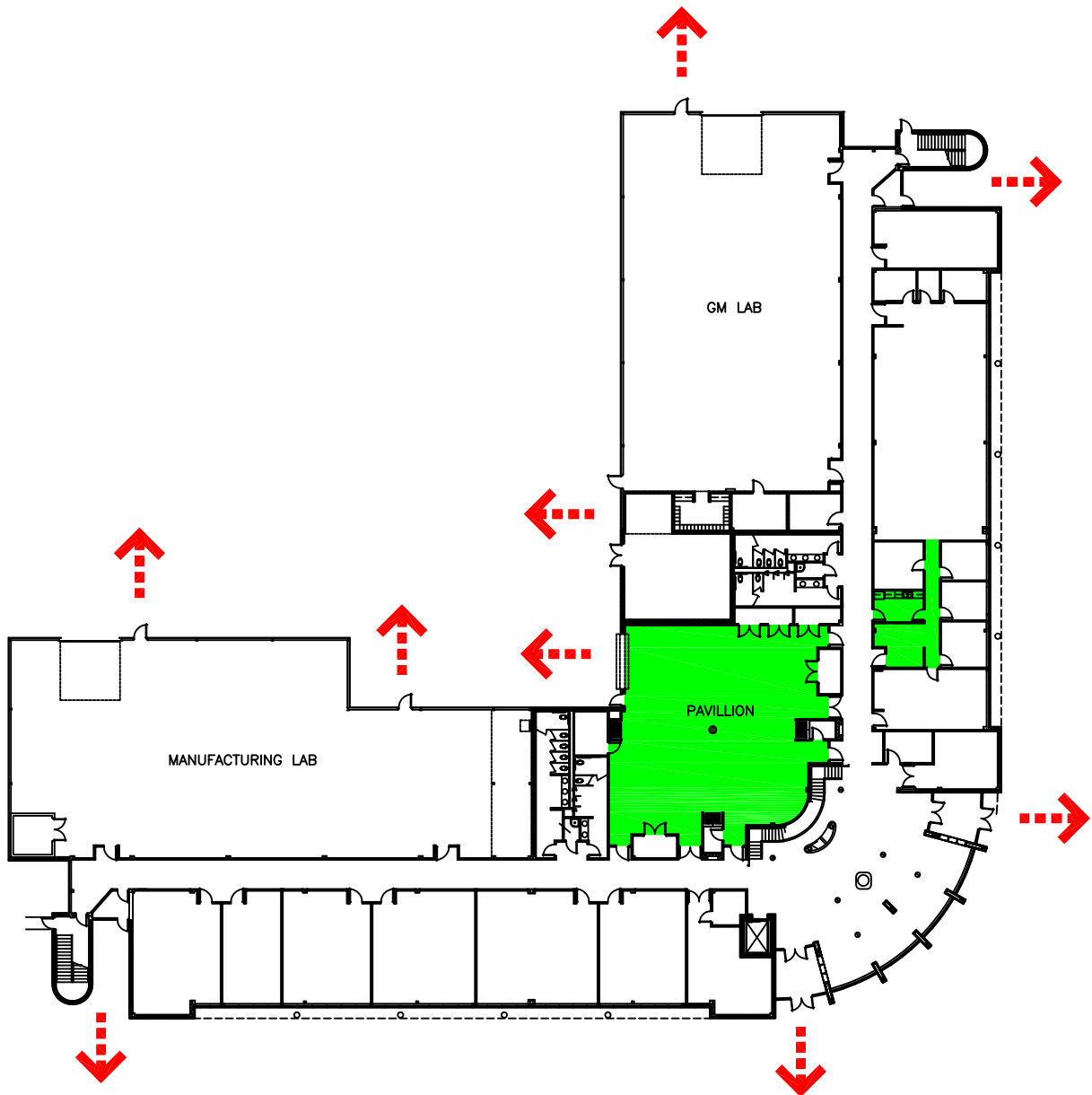


IN CASE OF FIRE

LEAVE BUILDING THROUGH
THE NEAREST EXIT AND REMAIN A
SAFE DISTANCE AWAY
UNTIL ALL IS CLEAR

IN CASE OF HIGH WIND

MOVE TO THE LOWEST LEVEL
OF THE BUILDING AND REMAIN IN AN
INNER SPACE WITHOUT WINDOWS
UNTIL ALL IS CLEAR



NORTH

BLDG. 305 / REYNOLDS TECHNOLOGY CENTER - EVACUATION PLAN

DATE: 4/8/15

FILENAME: 305FEP