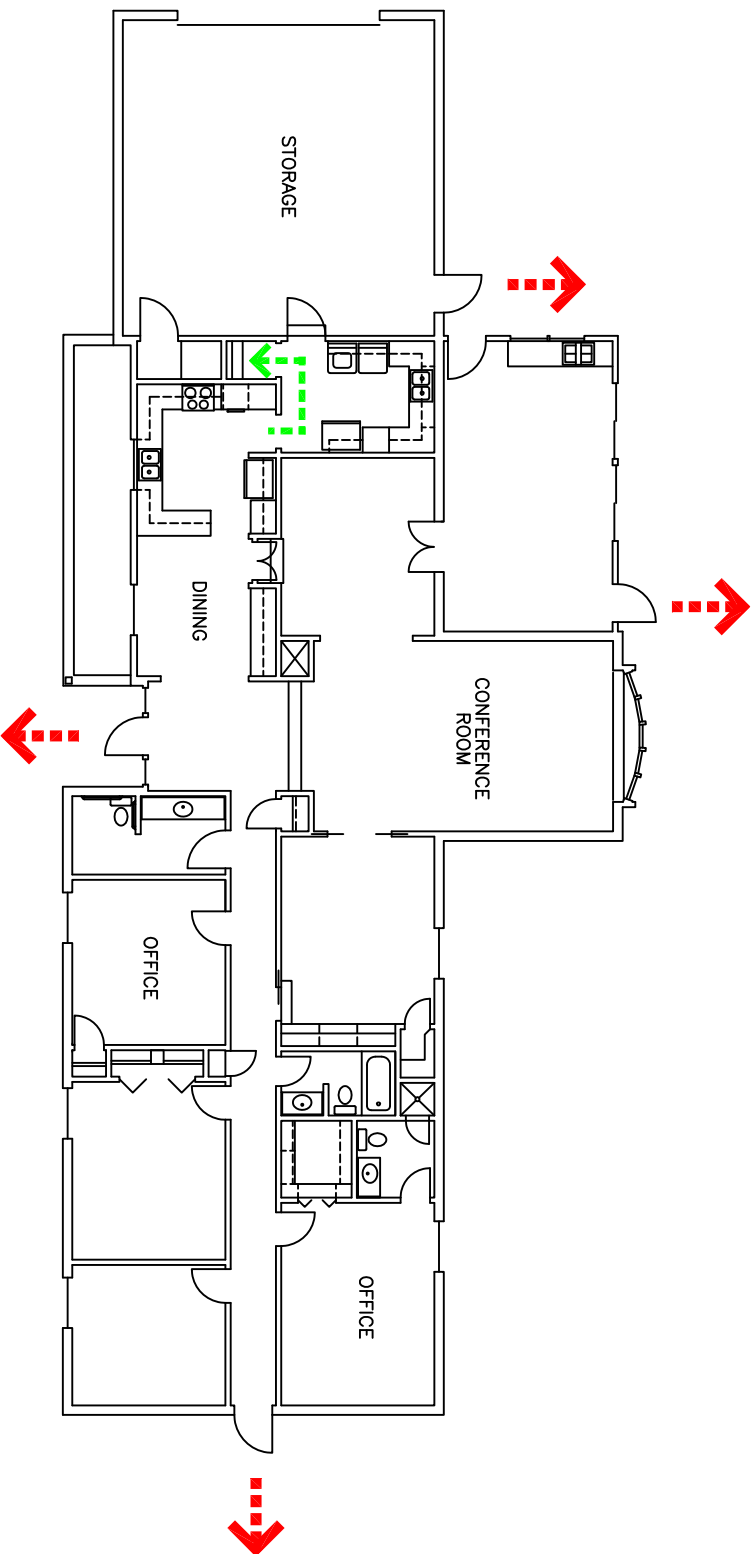


IN CASE OF FIRE

LEAVE BUILDING THROUGH
THE NEAREST EXIT AND REMAIN A
SAFE DISTANCE AWAY
UNTIL ALL IS CLEAR

IN CASE OF HIGH WIND

MOVE TO THE BASEMENT
OF THIS BUILDING AND
REMAIN THERE
UNTIL ALL IS CLEAR



NORTH

BLDG. 602 / PROFESSIONAL DEVELOPMENT CENTER - EVACUATION PLAN

DATE: 4/8/15

FILENAME: 602FEP